

2,000 V - 5,000 V Rectifiers

2.0 A - 5.0 A Forward Current

70 ns Recovery Time

1N6513U

1N6515U

1N6517U

SURFACE MOUNT
HERMETICALLY SEALED



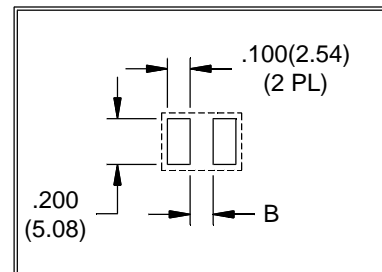
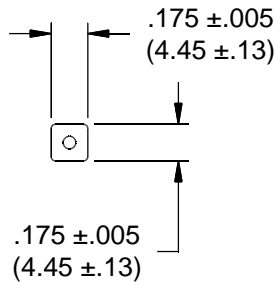
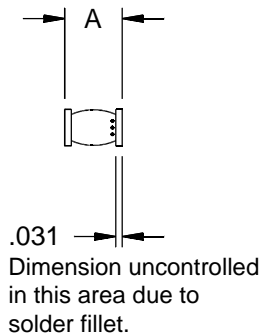
JANTX JANTXV

ELECTRICAL CHARACTERISTICS AND MAXIMUM RATINGS

| Part Number | Working Reverse Voltage (V _{rwm}) | Average Rectified Current (I _o) | | Reverse Current @ V _{rwm} (I _r) | | Forward Voltage (V _f) | | 1 Cycle Surge Current t _p =8.3ms (I _{fsm}) | Repetitive Surge Current (I _{frm}) | Reverse Recovery Time (3) (T _{rr}) | Thermal Impd. θ _{J-C} | Junction Cap. @50VDC @1kHz (C _j) |
|-------------|--|--|----------|---|-------|--------------------------------------|------|---|---|--|-----------------------------------|---|
| | | 55°C(1) | 100°C(2) | 25°C | 100°C | 25°C | 25°C | | | | | |
| | Volts | Amps | Amps | μA | μA | Volts | Amps | Amps | Amps | ns | °C/W | pF |
| 1N6513U | 2000 | 5.0 | 3.3 | 1.0 | 25 | 3.5 | 2.0 | 100 | 15 | 70 | 4 | 25 |
| 1N6515U | 3000 | 3.5 | 2.3 | 1.0 | 25 | 6.0 | 1.5 | 60 | 10 | 70 | 4 | 20 |
| 1N6517U | 5000 | 2.0 | 1.3 | 1.0 | 25 | 8.0 | 1.0 | 40 | 8 | 70 | 4 | 16 |

(1)TC=55°C (2)TC=100°C (3)I_f=0.5A, I_r=1.0A, I_{rr}=0.25A *Op. Temp.= -65°C to +175°C Stg. Temp.= -65°C to +200°C

Markings:
Three Dots for polarity.



| Part | A | B |
|---------|---------------------------|------------|
| 1N6513U | .235 ±.010 (5.97 ±.25) | .105(2.67) |
| 1N6515U | .255 ±.010 (6.48 ±.25) | .125(3.18) |
| 1N6517U | .275 ±.010 (6.99 ±.25) | .145(3.68) |



Dimensions: In. (mm) • All temperatures are ambient unless otherwise noted. • Data subject to change without notice.



VOLTAGE MULTIPLIERS INC.
8711 W. Roosevelt Ave.
Visalia, CA 93291

TEL 559-651-1402
FAX 559-651-0740
www.voltagemultipliers.com

1N6513U 1N6515U 1N6517U

