

2,000 V - 5,000 V Rectifiers
0.05 A - 0.25 A Forward Current
70 ns Recovery Time

1N6529U
1N6531U
1N6533U

SURFACE MOUNT
HERMETICALLY SEALED

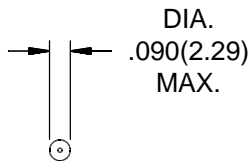
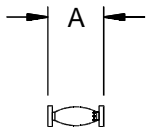


ELECTRICAL CHARACTERISTICS AND MAXIMUM RATINGS

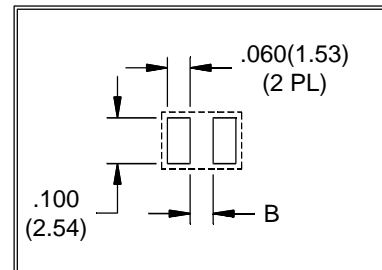
Part Number	Working Reverse Voltage (Vrwm)	Average Rectified Current (Io)		Reverse Current @ Vrwm (Ir)		Forward Voltage (Vf)		1 Cycle Surge Current tp=8.3ms (Ifsm)	Repetitive Surge Current (Ifrm)	Reverse Recovery Time (3) (Trr)	Thermal Impd. θ_{J-C}	Junction Cap. @50VDC @1kHz (Cj)
		55°C(1)	100°C(2)	25°C	100°C	25°C	25°C					
	Volts	Amps	Amps	μ A	μ A	Volts	Amps	Amps	Amps	ns	°C/ W	pF
1N6529U	2000	0.250	0.125	0.1	10	3.0	0.025	10	1.50	70	20	4.0
1N6531U	3000	0.100	0.050	0.1	10	7.0	0.025	8	1.25	70	20	2.0
1N6533U	5000	0.050	0.025	0.1	10	9.0	0.025	4	0.75	70	20	1.0

(1)TC=55°C (2)TC=100°C (3)If=12.5mA, Ir=25.0mA, Irr=6.3mA *Op. Temp.= -65°C to +175°C Stg. Temp.= -65°C to +200°C

Markings:
 Three Dots for polarity.



.022
 Dimension uncontrolled
 in this area due to
 solder fillet.



Part	A	B
1N6529U	.190(4.83) MAX.	.110(2.79)
1N6531U	.210(5.34) MAX.	.130(3.30)
1N6533U	.230(5.84) MAX.	.150(3.81)



Dimensions: In. (mm) • All temperatures are ambient unless otherwise noted. • Data subject to change without notice.



VOLTAGE MULTIPLIERS INC.
 8711 W. Roosevelt Ave.
 Visalia, CA 93291

TEL 559-651-1402
 FAX 559-651-0740
 www.voltagemultipliers.com

6

1N6529U 1N6531U 1N6533U

