

## SURFACE MOUNT SWITCHING DIODES

**VOLTAGE** 75 Volts

**POWER** 200 mWatts

**PACKAGE** SOD-323

### FEATURES

- Fast switching speed.
- Surface mount package Ideally Suited for Automatic insertion
- Electrically Identical to Standard JEDEC
- High Conductance

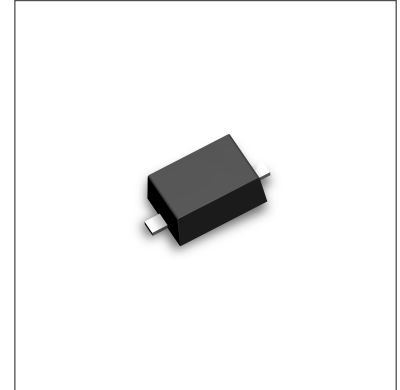
### MECHANICAL DATA

Case: SOD-323, Plastic

Terminals: Solderable per MIL-STD-202, Method 208

Approx. Weight: 0.008 gram

Marking: A2, A3



### MAXIMUM RATINGS AND ELECTRICAL CHARACTERISTICS

Ratings at 25°C ambient temperature unless otherwise specified.

Single phase, half wave, 60 Hz, resistive or inductive load.

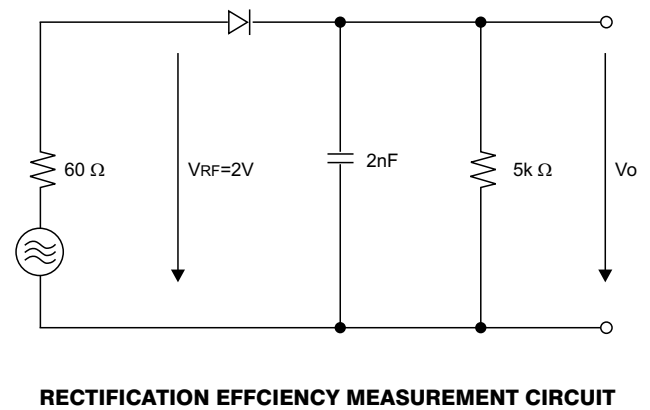
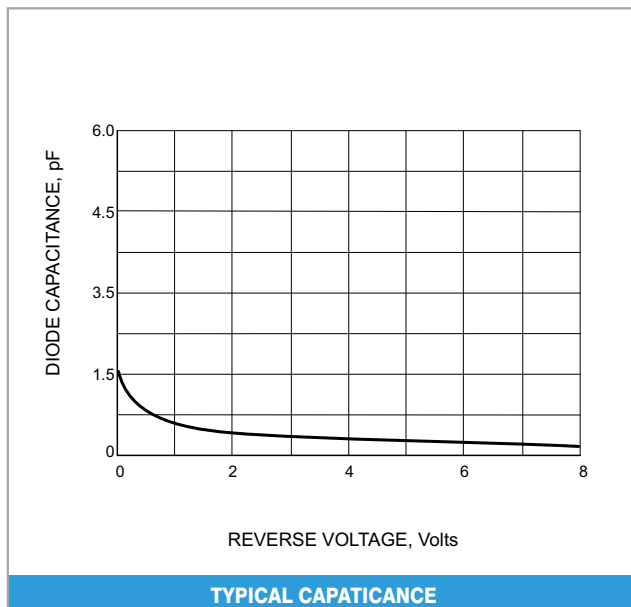
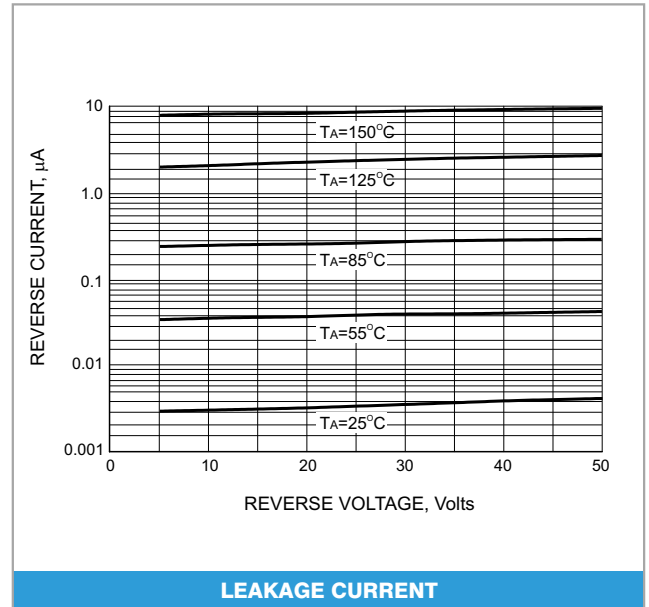
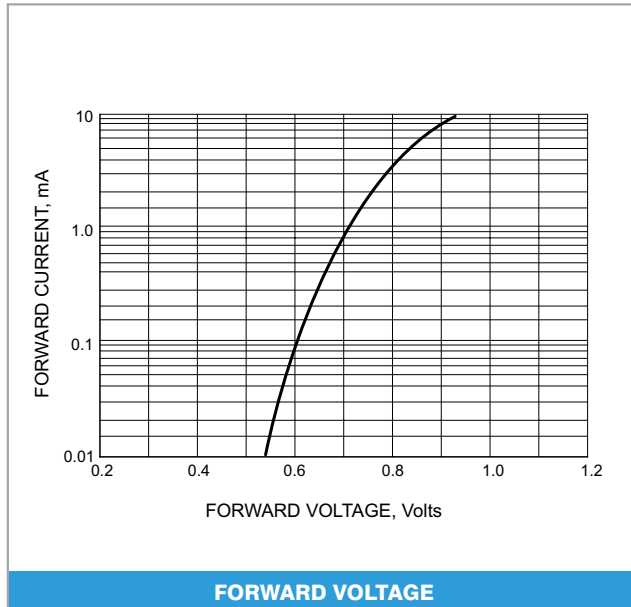
For capacitive load, derate current by 20%.

| PARAMETER   | SYMBOL           | 1N4148WS                 | 1N4448WS   | UNITS  |
|---|------------------|--------------------------|--|--------|
| Reverse Voltage   | V <sub>R</sub>   | 75                       | 75   | V      |
| Peak Reverse Voltage  | V <sub>RM</sub>  | 100                      | 100  | V      |
| Rectified Current (Average), Half Wave Rectification with Resistive Load and f >=50 Hz            | I <sub>o</sub>   | 150                      | 150  | mA     |
| Peak Forward Surge Current, 8.3ms single half sine-wave superimposed on rated load (JEDEC method) | I <sub>FSM</sub> | 2.0                      | 4.0  | A      |
| Power Dissipation Derate Above 25°C   | P <sub>TOT</sub> | 200                      | 200  | mW     |
| Maximum Forward Voltage   | V <sub>F</sub>   | 1 @ I <sub>F</sub> =10mA | 0.72 @ I <sub>F</sub> =5mA<br>1 @ I <sub>F</sub> =10mA | V      |
| Maximum DC Reverse Current at Rated DC Blocking Voltage<br>T <sub>J</sub> = 25°C                  | I <sub>R</sub>   | 2.5                      | 2.5  | μA     |
| Typical Junction Capacitance( Notes1)   | C <sub>Jot</sub> | 4.0                      | 4.0  | pF     |
| Maximum Reverse Recovery (Notes2)   | T <sub>RR</sub>  | 4.0                      | 4.0  | ns     |
| Maximum Thermal Resistance  | R <sub>θJA</sub> | 357                      |  | °C / W |
| Storage Temperature Range   | T <sub>J</sub>   | -55 TO +125              |  | °C     |

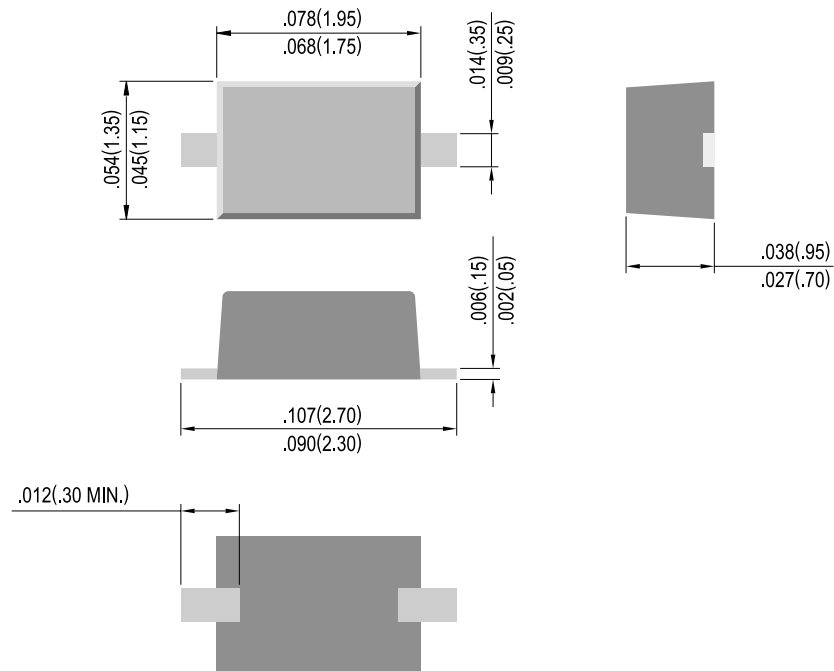
NOTE:

1. C<sub>J</sub> at V<sub>R</sub>=0, f=1MHZ

2.From I<sub>F</sub>=10mA to I<sub>R</sub>=1mA, V<sub>R</sub>=6Volts, R<sub>L</sub>=100Ω



**SOD-323**



© Copyright Panjit International Inc. 2001

All rights are reserved. Reproduction in whole or in part is prohibited without the prior written consent of the copyright owner.

The information presented in this document does not form part of any quotation or contract, is believed to be accurate and reliable and may be changed without notice. No liability will be accepted by the publisher for any consequence of its use.

Publication thereof does not convey nor imply any license under patent or other industrial or intellectual property rights.

**PanJit International Inc.**

TEL:886-7-6213121 Fax:886-7-6213129 Internet: <http://www.panjit.com.tw> email: [sales@panjit.com.tw](mailto:sales@panjit.com.tw)