

POWER TVS COMPONENT
APPLICATIONS

- ✓ Relay Drives
- ✓ Motor (Start/Stop) Back EMF Protection
- ✓ Module Lightning Protection

IEC COMPATIBILITY (EN61000-4)

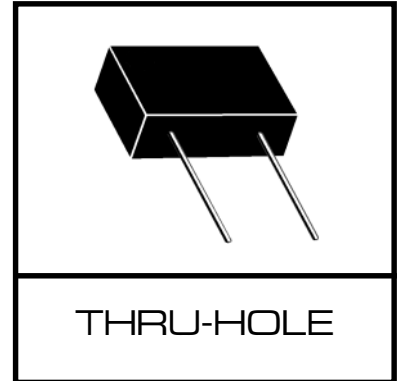
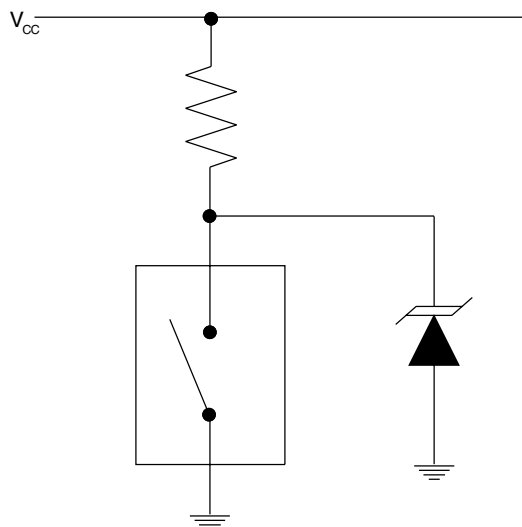
- ✓ 61000-4-5 (Surge): 48A, 8/20 μ s - L3(Line-Gnd), L1(Power) & L4 (Line-Line)

FEATURES

- ✓ 15,000 Watts Peak Pulse Power Dissipation per Line (10/1000 μ s)
- ✓ Unidirectional & Bidirectional Configurations
- ✓ Easy Mounting to Printed Circuit Boards
- ✓ Available in Voltage Types Ranging From: 17V to 220V

MECHANICAL CHARACTERISTICS

- ✓ Molded Case
- ✓ Weight 13 grams (Approximate)
- ✓ Flammability Rating UL 94V-0
- ✓ Positive Terminal Marked with Dot - *Unidirectional Devices Only*
- ✓ Marking: Logo & Part Number


APPLICATION
TYPICAL RELAY DRIVE PROTECTION


15KP17A thru 15KP220A

DEVICE CHARACTERISTICS

MAXIMUM RATINGS @ 25°C Unless Otherwise Specified			
PARAMETER	SYMBOL	VALUE	UNITS
Peak Pulse Power Dissipation ($t_p = 10/1000\mu s$) - See Fig. 1	P_{PP}	15,000	Watts
Forward Surge Rating (1/20 seconds) - See Note 2	I_F	200	Amps
Steady State Power Dissipation	P_D	1.0	Watts
Storage Temperature	T_{STG}	-55 to +150	°C
Operating Temperature	T_J	-55 to +150	°C

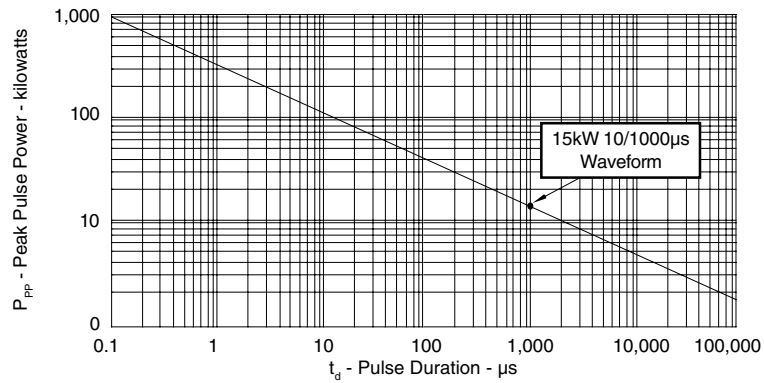
ELECTRICAL CHARACTERISTICS @ 25°C Unless Otherwise Specified						
PART NUMBER (Notes 1 & 2)	RATED STAND-OFF VOLTAGE V_{WM} VOLTS	BREAKDOWN VOLTAGE		MAXIMUM LEAKAGE CURRENT @ V_{WM} I_D μA	MAXIMUM CLAMPING VOLTAGE (See Fig. 2) @ 10/1000 μs V_C @ I_{PP}	TEMPERATURE COEFFICIENT OF $V_{(BR)}$ $\theta V_{(BR)}$ mV/°C
		MIN $V_{(BR)}$ VOLTS	@ I_T mA			
15KP17A	17.0	18.9	50	5000	29.3V @ 512.0A	17
15KP20A	20.0	22.2	20	1500	34.3V @ 437.0A	21
15KP28A	28.0	31.1	5	25	47.5V @ 316.0A	31
15KP30A	30.0	33.3	5	15	50.7V @ 296.0A	34
15KP33A	33.0	36.7	5	10	54.8V @ 274.0A	38
15KP36A	36.0	40.0	5	10	59.7V @ 251.0A	41
15KP48A	48.0	53.3	5	10	77.7V @ 193.0A	56
15KP54A	54.0	60.0	5	10	87.5V @ 171.0A	63
15KP60A	60.0	66.7	5	10	97.3V @ 154.0A	71
15KP70A	70.0	77.8	5	10	114.0V @ 132.0A	83
15KP75A	75.0	83.3	5	10	122.0V @ 123.0A	89
15KP85A	85.0	94.4	5	10	137.0V @ 109.0A	102
15KP90A	90.0	100.0	5	10	146.0V @ 103.0A	109
15KP160A	160.0	178.0	5	10	259.0V @ 58.0A	195
15KP170A	170.0	189.0	5	10	275.0V @ 55.0A	207
15KP180A	180.0	200.0	5	10	291.0V @ 52.0A	219
15KP220A	220.0	245.0	5	10	356.0V @ 42.0A	269

Note 1: Part numbers shown are unidirectional devices. Add a "CA" suffix to specify bidirectional devices, such as 15KP20CA. Devices shown are preferred voltages. Contact factory for additional voltages.

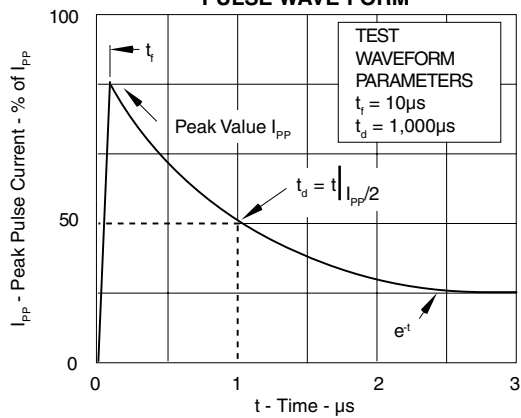
Note 2: $V_F = 7.5$ Volts @ 200A, 8.3ms (1/2 Sine Wave) - unidirectional devices only.

GRAPHS

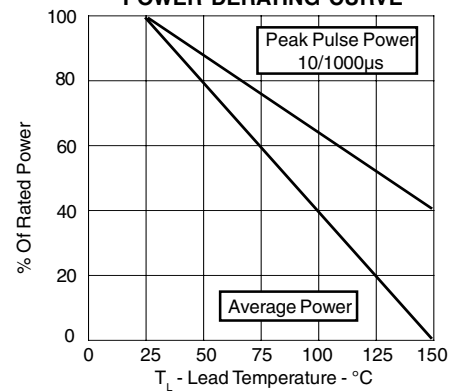
**FIGURE 1
PEAK PULSE POWER VS PULSE TIME**



**FIGURE 2
PULSE WAVE FORM**



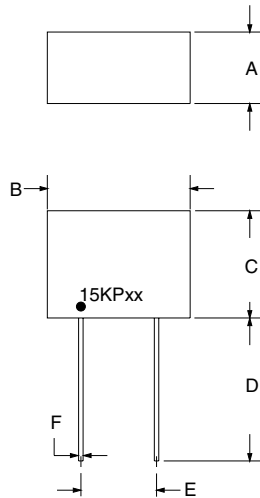
**FIGURE 3
POWER DERATING CURVE**



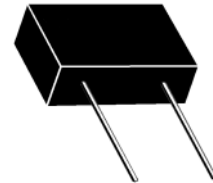
15KP17A thru 15KP220A

PACKAGE OUTLINE & DIMENSIONS

PACKAGE OUTLINE



15KP



PACKAGE DIMENSIONS

DIM	MILLIMETERS		INCHES	
	MIN	MAX	MIN	MAX
A	9.18	11.22	0.36	0.44
B	24.38	26.42	0.96	1.04
C	15.75	17.27	0.62	0.68
D	16.51	-	0.65	-
E	14.74	15.75	0.58	0.62
F	1.19	1.35	0.047	0.053

NOTES:

1. Dimensions are exclusive of mold flash and metal burrs.

06027 Rev 0 - 12/01

Protek Devices
2929 South Fair Lane, Tempe, AZ 85282
Tel: 602-431-8101 Fax: 602-431-2288
E-Mail: sales@protekdevices.com
Web Site: www.protekdevices.com

COPYRIGHT © ProTek Devices 2001

SPECIFICATIONS: ProTek reserves the right to change the electrical and or mechanical characteristics described herein without notice (except JEDEC).

DESIGN CHANGES: ProTek reserves the right to discontinue product lines without notice, and that the final judgement concerning selection and specifications is the buyer's and that in furnishing engineering and technical assistance, ProTek assumes no responsibility with respect to the selection or specifications of such products.